



# GHOX-F



SHENYANG YUANDA INTELLECTUAL INDUSTRY GROUP CO., LTD.  
Add: No. 27, Development Road, Shenyang Economic & Technology  
Development Zone, China P.C: 110027  
<http://www.bltelevator.com>  
Email: [info@bltelevator.com](mailto:info@bltelevator.com)

**FBLT** X-HOMELIFT

# Meaning

"X" represents future , science and technology, concept, exploration,  
and BLT's vision for the future of home elevators



## New Concept

The most important thing for the success of any technological revolution is to have a fundamentally different way of thinking. In the past, present and future, X•HOMELIFT will change our perception of home elevators !

Nowadays, the real estate market is divided into several targeted products based on different user groups' characteristics and their respective pursuit of quality of life. The trend of segmented markets has driven the vigorous development of many supporting industries. In response to the differentiation of product functions, pricing, and demand brought about by this segmented market, the original commercial elevator system cannot adapt to the rapidly changing home elevator market, in terms of the product itself or the manufacturer's business model. Architectural forms such as townhouses, stacked buildings, large flat floors, duplex buildings and even self-built houses are constantly enriching the market. The original single concept of villas is rapidly changing to the level of household and intelligence. The concept of "X • HOMELIFT" came into being against such a background.



# COMPANY PROFILE

Shenyang Yuanda Intellectual Industry Group Co., Ltd. is affiliated to Yuanda Enterprise Group. Its BLT Elevator is a professional company engaged in the design, manufacturing, installation and after-sales service of modern elevator products.

## Listed company

On July 17, 2012, the company was successfully listed on the Shenzhen Stock Exchange (002689.SZ). Since then, BLT Elevator has stepped onto a new level and embarked on a new journey.

## Quality system

Seeking reputation with quality control, seeking market with high-quality products, all management and control indicators have reached international advanced standards, a super-large elevator manufacturing base of 560,000 square meters, a 177-meter-high iconic full-featured elevator test tower, and the continuously improving production process of fully CNC intelligent products, 137 items of product quality inspection and control, more than 100 independent patents and international certification of products, ensure the safe operation of BLT elevator without accidents.

## R & D capabilities

The "Yuanda BLT" elevator with independent intellectual property rights and independent brand has been already among the leading ranks in the global elevator industry achieving the perfect combination of the world's top technology, talents and first-class equipment, making BLT's main business continuously expand, and become a world-class technology research and development center and talent center in the same industry.

## Dedicated to export

No matter in China or in the world, BLT has spread to every corner of the world with its excellent quality and extraordinary creativity, building a cutting-edge brand in the elevator industry in the technological era. BLT provides high-quality elevator products to more than 140 countries and regions, and provides comprehensive maintenance services for global customers.



# SERVICE SYSTEM

## X•HOMELIFT Service system introduction

### SALES SERVICE

By taking the advantages of Yuanda's global sales network and overseas warehouse layout, BLT X•HOME LIFT has promoted the GHOX series products to the world, allowing domestic and foreign users to experience the technology and level of "Made in China".

### DESIGN SERVICE

BLT X•HOMELIFT has changed the concept of thinking and sales model, while people are paying more attention to the consumption experience, the household industry is also developing in the direction of integration, after fully investigating and researching the home furnishing market, according to the actual use scenario, size and environmental requirements of different users, GHOX-F (Hong), GHOX-G (Rong), GHOX-P (An) series of home elevator products have been launched, and this team will also insist on providing technical support and training for stores, as well as store construction, business negotiations and other services.

### ENGINEERING SERVICE

According to the particularity of the use of the environment, BLT X•HOMELIFT strictly follows the installation management methods and factory inspection standards of the manufacturer, and pays attention to the details in the end.

### AFTER-SALES MAINTENANCE SERVICE

BLT X•HOMELIFT, as a series of products of Yuanda Intellectual Industry Group, relies on the company's global strategic layout of "1 headquarters, 6 manufacturing bases, 96 sales branches and divisions, 121 after-sales service stations, covering more than 140 countries and regions", as well as advanced Internet of Things technology to provide terminal owners with 24-hour intelligent after-sales service, nearby factory manufacturing, shipping and other advantages.



24

24 hours intelligent after-sales service

96

96 sales branches and divisions

121

121 after-sales service stations

140+

over 140 national and regional strategic layouts



# PRODUCT ADVANTAGES

## Adopt traditional gantry structure

Higher safety factor | More stable and reliable operation |  
two counterweight arrangements(side, rear)

It is suitable for the installation of various residential products, the design of the minimum 150mm shallow pit, and the concept of making full use of the shaft space are extreme but reasonable

## Solid guide rail

Enhance the overall framework strength and ensure a solid and  
stable structural foundation

## Hydraulic buffer

The performance of the elevator is always the same throughout its life,  
without maintenance

## A new generation of high-strength polyurethane composite steel strip

It has obtained the report of the National Elevator Quality Supervision and  
Inspection Center and the fatigue test certificate of 10 million times

**150**<sub>mm</sub>  
Ultra Shallow Pit Design

**1000**  
10million  
Times steel strip fatigue  
test certificate

Example structure: GHOX-F side counterweight  
upper return rope type steel belt home elevator

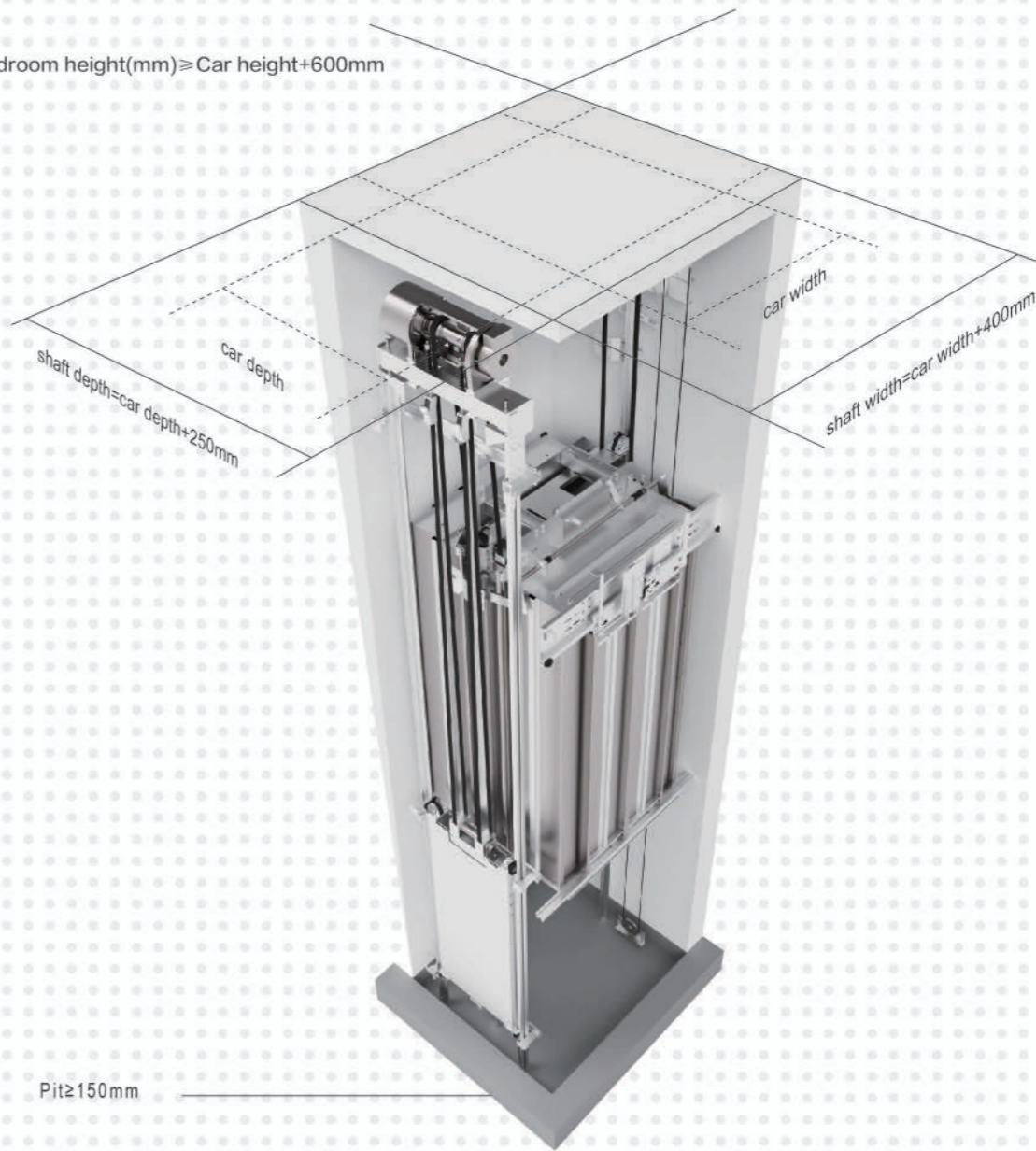
Safety device system

Components maintenance-free system

Three safety components X • HOMELIFT



Headroom height(mm)≥Car height+600mm



Note:Side counterweight structure, taking center-opening door as an example, regardless of door opening size

SPACE UTILIZATION

Extreme space utilization

BLT X•HOMELIFT is always committed to "reaching the maximum size in the limited space ", the integrated car has a more compact structure, improving the utilization rate of shaft, meeting the requirements of small pit and solving the problem of insufficient height of headroom height of low-rise residential buildings

## CONTROL SYSTEM

Enjoy a high-quality life.

X-CONTROL  
has international certified STO  
security control technology



Size: 0.5mH×0.3mW×0.16m D

- **Ingenuity and practicality**  
Deep integration, MINI volume is only 30% of the traditional control cabinet,
- **Perfect integration of industry and home**  
The control cabinet can be integrated into the overall design of decoration, and installation position is optional
- **Serenity guarding**  
No contactor application, no fan design, control cabinet volume in line with suitable living environment standards
- **Enjoy a pleasant and comfortable life**  
High performance drive platform with innovative algorithm completely solves the problem of elevator startup and operation comfort
- **Provide security for life**  
With special star sealing scheme, there is no longer a safety risk of falling.  
ARD power failure emergency rescue, electric brake release, car one key dialing rescue.

Integrated cabinet on car top  
Product features: small size,  
ultra-thin, more suitable for home elevator



## ACTIVE SAFETY TECHNOLOGY

ACTIVE SAFETY, nip in the bud.



### X-SAFE star sealing technology

Even in the most extreme state, the elevator will not stall, fundamentally eliminating falling accidents



### X-IOT Internet of Things

Remote elevator management, big data statistical analysis of elevator failure rate, advance prediction of possible elevator failures



### X-ARD Power failure rescue

The system ARD module automatically recognizes the status of the power grid. Once a power failure occurs, the elevator automatically levels nearby to ensure the safe departure of passengers

## PASSIVE SAFETY TECHNOLOGY

Passive and active, more reliable and complete



### X-AUTO RESCUE Automatic rescue

When faults occur and the system cannot operate normally, the system automatically enters the rescue mode, and automatically opens the door after running at a low speed to the leveling floor



### X-PHONE One-key remote call

When someone is trapped in the car, dial the pre-stored phone number through the alarm button to achieve rescue

# DECORATION DISPLAY

## Yuanda BLT X•HOMELIFT Team Production

BLT X•HOMELIFT has also invited outstanding domestic home designers to create car decorations for GHOX series products across industries, which are more in line with popular decoration styles and break the traditional use of stainless steel materials in the industry. With the development and changes of trends, we still adhere to the innovation of car decoration, striving to match the overall decoration style of the owners.

Note: Rendering pictures are for display only

## Guan · GHOX G257—optional

- [ Car ceiling ]: PD145 No main light design.Mirror stainless steel、Extremely thin light strip、LED virtual light
- [ Rear wall ]: Aluminum alloy frame glass car wall, Electrostatic powder coating on aluminum alloy surface,Frostfall white
- [ Side walls ]: Aluminum alloy frame glass car wall, Electrostatic powder coating on aluminum alloy surface,Frostfall white
- [ side and middle car walls ]: mirror stainless steel
- [ Front wall,transom ]: Steel plate electrostatic powder spraying,Frostfall white
- [ Car door ]: Aluminum alloy frame glass car wall, Electrostatic powder coating on aluminum alloy surface,Frostfall white
- [ Floor ]: PlasticFSJ-034
- [ Handrail ]: Aluminum alloy H026( Frostfall white )
- [ Glass ]: 5+0.76+5 laminated glass,colorless and transparent
- [ Operation panel ]: Black tempered glass touch panel,C225G



Frostfall white



Starshine black



Amitabha gold



Champagne gold



Rose Gold

## Simple• GHOX-Tu I

### Designer's message:

Simple etching combined with ultimate colors, embellishing various warmth in life



### H049—Standard configuration

- 【 Car ceiling 】: PD145, Mirror stainless steel, Extremely thin light strip, LED virtual light strip
- 【 Rear wall 】: Hairline stainless steel+Mirror etched stainless steel( MSK-017 )
- 【 Front wall,transom 】: Hairline stainless steel
- 【 Car door 】: Hairline stainless steel
- 【 Side walls 】: Hairline stainless steel+Mirror stainless steel( side car wall + middle car wall )
- 【 Floor 】: PlasticFSJ-034
- 【 Handrail 】: Aluminum alloy H026(Grey)
- 【 Operation panel 】: Black tempered glass touch panel, C225G



### GHOX- II

H050  
Optional selection



MSK-018



### GHOX- III

H051  
Optional selection



MSK-016



### GHOX-IV

H052  
Optional selection



MSK-019



### GHOX- V

H053  
Optional selection



MSK-020



Materials available for selection, more options, please refer to our material catalog

Note:Rendering pictures are for display only



Mirror stainless steel



Titanium black mirror stainless steel



Titanium gold mirror stainless steel



Rose gold mirror stainless steel



Champagne gold mirror stainless steel

## Simple•GHOX—Rong

### Designer's message:

Every detail is full of tension, without extra decoration, it can show the inner beauty .



### H054—Optional selection

- 【 Car ceiling 】: PD145, Mirror stainless steel, Extremely thin light strip, LED virtual light strip
- 【 Rear wall 】: Calfskin color patterned board + Mirror stainless steel
- 【 Front wall, transom 】: Mirror stainless steel
- 【 Car door 】: Hairline stainless steel
- 【 Side walls 】: Calfskin color patterned board + Mirror stainless steel ( side car wall + middle car wall )
- 【 Floor 】: Plastic FSJ-036
- 【 Handrail 】: Aluminum alloy H026 ( Grey )
- 【 Operation panel 】: Black tempered glass touch panel, C225G



### H055—Optional selection

- 【 Car ceiling 】: PD145, Mirror stainless steel, Extremely thin light strip, LED virtual light strip
- 【 Rear wall 】: Gray wood color pattern board + Mirror stainless steel
- 【 Front wall, transom 】: Mirror stainless steel
- 【 Car door 】: Hairline stainless steel
- 【 Side walls 】: Gray wood color pattern board + Mirror stainless steel ( side car wall + middle car wall )
- 【 Floor 】: Plastic FSJ-036
- 【 Handrail 】: Aluminum alloy H026 ( Grey )
- 【 Operation panel 】: Black tempered glass touch panel, C225G



## Simple•GHOX—Cai



### H056—Optional selection

- 【 Car ceiling 】: PD145, Mirror stainless steel, Extremely thin light strip, LED virtual light strip
- 【 Rear wall 】: Oak colored patterned board + Mirror stainless steel
- 【 Front wall, transom 】: Mirror stainless steel
- 【 Car door 】: Hairline stainless steel
- 【 Side walls 】: Oak colored patterned board + Mirror stainless steel ( side car wall + middle car wall )
- 【 Floor 】: Plastic FSJ-036
- 【 Handrail 】: Aluminum alloy H026 ( Grey )
- 【 Operation panel 】: Black tempered glass touch panel, C225G



## Simple•GHOX—Ru



# French style•Shan-GHOX

Designer's message:  
A representative work of French pastoral style, combining pure white with wood, simple and warm, full of natural atmosphere, a acre of pastoral time, as if returning to simplicity



## H036— Optional selection

Car ceiling: PD068,white wooden,champagne gold mirror decorative strip,LED downlighter,LED virtual light  
Rear wall: wooden decorative wall (embedded mural)  
Front wall, transom: Steel plate baking paint  
Car door: champagne gold mirror stainless steel  
Side walls: wooden decorative wall (embedded mirror)and champagne gold mirror stainless steelside car wall+ middle car wall  
Floor: plastic FSJ-031  
Handrail: aluminum alloy H026( champagne gold)  
Operation panel: black tempered glass touch panel,C225G



# European style•Qi-GHOX

Designer's message:  
The layout of golden etching is not only luxurious and atmospheric, but also comfortable and romantic, simple, abstract, bright, and modern



## H037— Optional selection

Car ceiling: PD069,painted steel sheet RAL9003,acrylic transparent board, LED uniform lighting  
Rear wall: champagne gold mirror etched stainless steel(MSK-026)  
Front wall, transom: champagne gold hairline stainless steel  
Car door: champagne gold hairline etched stainless steel(MSK-022)  
Side walls: champagne gold hairline stainless steel and champagne gold mirror stainless steel(side car wall+ middle car wall)  
Floor: plastic FSJ-031  
Handrail: aluminum alloy H026 ( champagne gold)  
Operation panel: black tempered glass touch panel,C225G



Light luxury•GHOX-Lin

Designer's message:  
The traditional mirror etching makes the entire elevator car incredibly transparent, interpreting the stretching of the spirit and the release of the soul.....



H038— Optional selection

Car ceiling: PD070,painted steel sheet RAL9003,mirror stainless steel frame,acrylic transparent plate,LED virtual light  
Rear wall: hairline stainless steel and mirror etched stainless steel (MSK-024)  
Front wall, transom: hairline stainless steel  
Car door: hairline stainless steel  
Side walls: hairline stainless steel and mirror stainless steel (side car wall+ middle car wall)  
Floor: plastic FSJ-032  
Handrail: aluminum alloy H026 ( gray)  
Operation panel: black tempered glass touch panel,C225G



Light luxury•GHOX-You

Designer's message:  
Mirror etching and wood grain are seamlessly integrated, and light luxury is not only a style, but also a way of life, representing a lifestyle that pursues quality.....



H039— Optional selection

Car ceiling: PD071,painted steel sheet RAL9003,rose gold mirror frame and decorative strip,LED virtual light ,LED down light  
Rear wall: mirror stainless steel and Mirror etched stainless steel and LED light strip  
Front wall, transom: wood grain steel plate  
Car door: rose gold mirror etched stainless steel (MSK-025)  
Side walls: wood grain steel plate and rose gold mirror stainless steel (side car wall+ middle car wall)  
Floor: plastic FSJ-033  
Handrail: aluminum alloy H026( rose gold)  
Operation panel: black tempered glass touch panel,C225G



# Modern •Zhen-GHOX

## Designer's message:

The combination of elements, colors, and lighting requires simplicity without losing texture, highlighting style and function



## H040— Optional selection

Car ceiling: PD072,rose gold mirror stainless steel, LED virtual light strip,LED light strip  
Rear wall: rose gold mirror stainless steel and wood grain steel plate and LED light strip  
Front wall, transom: rose gold hairline stainless steel  
Car door: rose gold mirror stainless steel  
Side walls: rose gold hairline stainless steel and rose gold mirror stainless steel(side car wall+ middle car wall) and LED light strip  
Floor: plastic FSJ-034  
Handrail: aluminum alloy H026(rose gold)  
Operation panel: black tempered glass touch panel,C225G



Scan for  
3D review



# Modern •Bai-GHOX

## Designer's message:

The modernist style car, which contains multiple elements, carries the Bauhaus school to the end.....

## H041— Optional selection

Car ceiling:PD073,titanium black mirror stainless steel frame,LED light box  
Rear wall: mirror stainless steel and art glass and grille and LED light strip  
Front wall,transom: wood grain steel plate  
Car door: titanium black mirror stainless steel  
Side walls: wood grain steel plate and titanium black mirror stainless steel (side car wall+ middle car wall)  
Floor: plastic FSJ-035  
Handrail: aluminum alloy H026( black)  
Operation panel: black tempered glass touch panel,C225G



Scan for  
3D review



## New Chinese Style•GHOX-Yun

### Designer's message:

The mountains are shrouded in clouds and mist, with countless ancient memories shrouded in obscurity. The morning sun returns to the mountains and seas, where deep meanings are hidden. All wishes are fulfilled, and there is much joy and eternal peace



### H042— Optional selection

Car ceiling: PD074,painted steel sheet RAL9003,LED virtual light strip,LED light strip  
Rear wall: wood grain steel plate and art glass  
Front wall, transom: wood grain steel plate  
Car door: rose gold mirror etched stainless steel (MSK-023)  
Side walls: wood grain steel plate and rose gold mirror stainless steel (middle)  
Floor: plastic FSJ—036  
Handrail: aluminum alloy H026 ( rose gold)  
Operation panel: black tempered glass touch panel,C225G



## New Chinese Style•GHOX-Rui

### Designer's message:

The grille, paired with popular new Chinese style lines, feels like being in a courtyard. The moon is full, people are peaceful, the lights are dim, and the stars are shining brightly. Embrace the evening breeze and feel their presence.....



### H043— Optional selection

Car ceiling: PD075,painted steel sheet RAL9003,— champagne gold mirror frame,LED virtual light strip ,LED down light.  
Rear wall: grille and wood grain steel plate  
Front wall, transom: wood grain steel plate  
Car door: champagne gold mirror etched stainless steel(MSK-021)  
Side walls: wood grain steel plate and champagne gold mirror stainless steel (middle)  
Floor: plastic FSJ—037  
Handrail: aluminum alloy H026(champagne gold)  
Operation panel: black tempered glass touch panel,C225G



# FLEXIBLE DECORATION

Smart Construction Fully Reflects The Designer's Ability To Integrate Aesthetic Feeling

## Landing/car door etched pattern



MSK-021



MSK-022



MSK-023



MSK-025

## Car ceiling



PD068



PD069



PD070



PD071



PD145



PD072



PD073



PD074



PD075



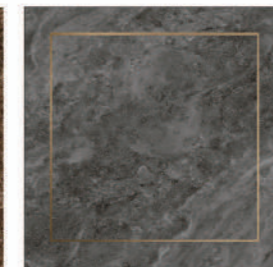
PD146

## Car floor

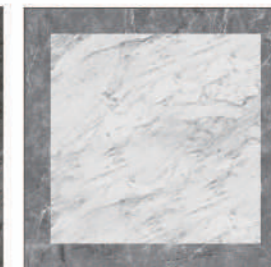
### Marble



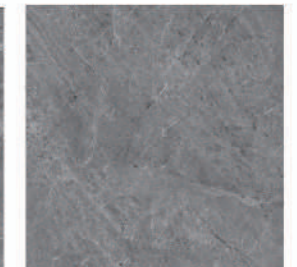
FSJ/DLS — 031



FSJ/DLS — 032



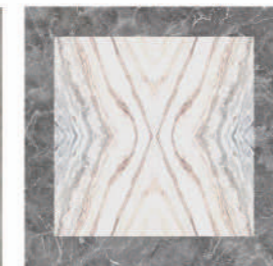
FSJ/DLS — 033



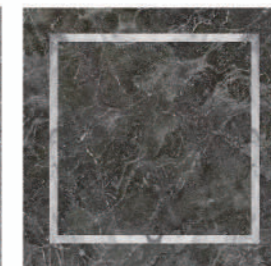
FSJ/DLS — 034



FSJ/DLS — 035



FSJ — 036



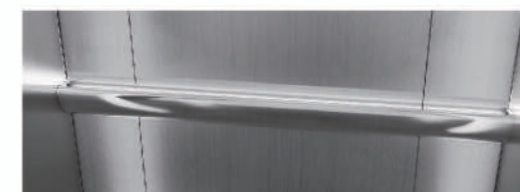
FSJ/DLS — 037



FSJ — 044 / DLS — 041

## Handrail

Standard configuration of aluminum alloy handrail, hidden light belt design



## LED pedal

The entire series of products are equipped with LED pedals to add color to the car



# MAN-MACHINE INTERACTIVE CONTROL

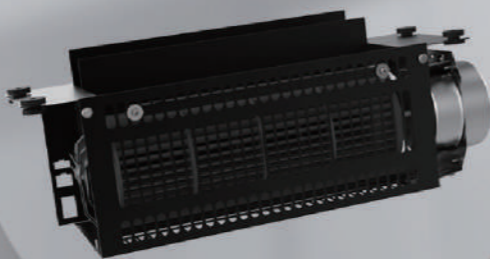
Use the elevator control system as a medium to enable communication between the user and the elevator

Elevator adopts  
Sterilizing fresh air system

Effectively remove **PM2.5**

Protect the respiratory health of passengers

Control panel integrated fan control system



Note: Rendering pictures are for display only



C225G (侧置)



H245A



H246A (标配)



H253A



H244A

MAN-MACHINE

## FACE RECOGNITION



Taking into full consideration the special usage scenarios or privacy needs of end users, a new AI processor design and intelligent operating system are adopted. It has powerful, stable, reliable, and highly secure features and is a new generation of multifunctional facial recognition access control all-in-one machine. This function is only designed, developed, and used for HOP H246A .

## BUILD AN INTEGRATED SECURITY SYSTEM PLATFORM

HOME LIFT creates an intelligent elevator safety management system that covers elevator information management, maintenance and repair supervision, and emergency rescue support.



## CHILD LOCK FUNCTION

### Improving the safety factor of children

It is designed to facilitate users to restrict young children from using the home lift alone. This optional feature can be turned on or off by users themselves, and is only designed, developed, and used for HOP H246A .

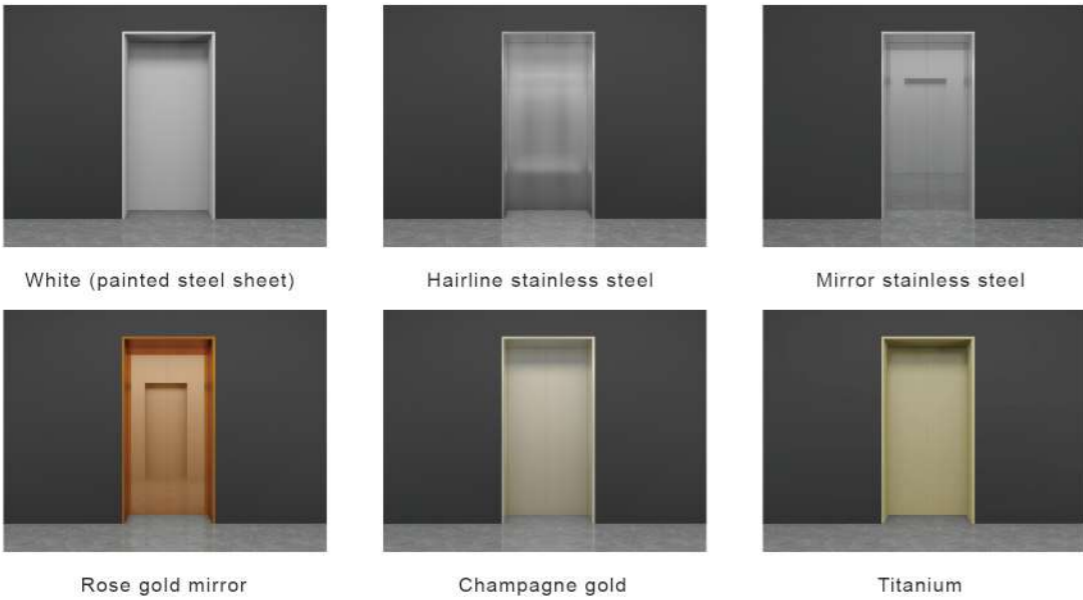




# ■AUTOMATIC DOOR DESIGN

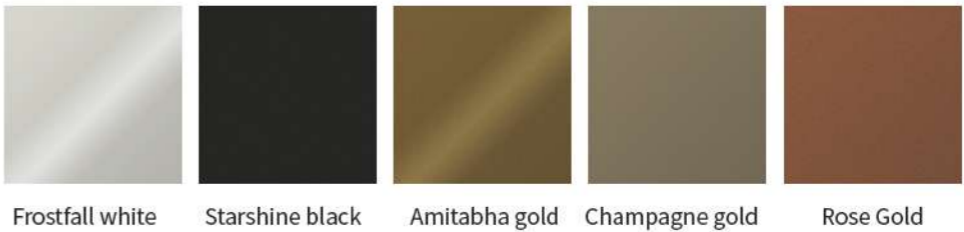
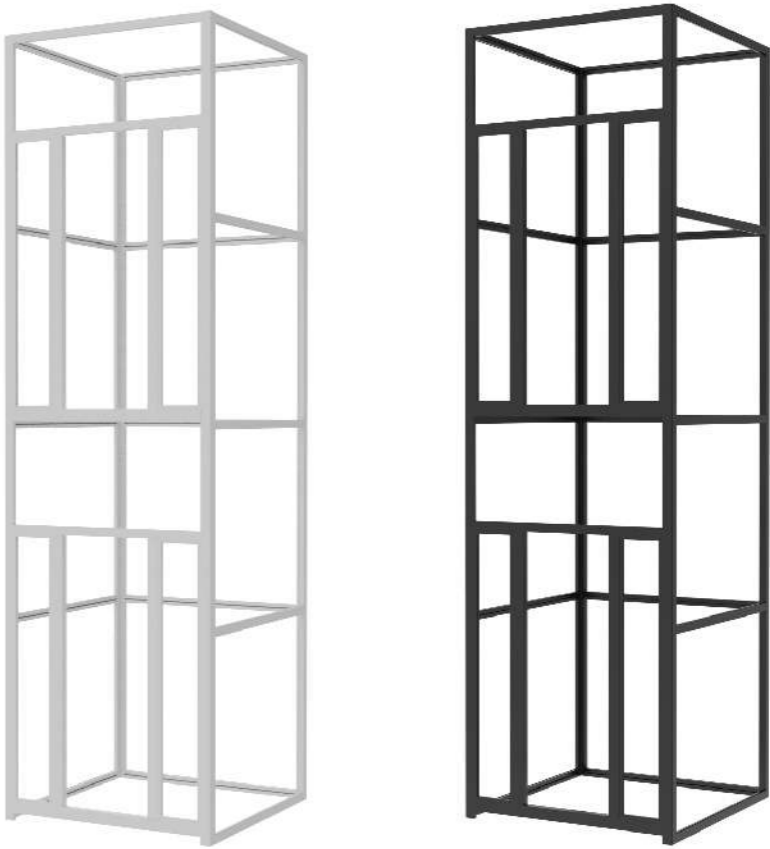
Change the color and material as you like, let X•HOMELIFT perfectly integrate into your home life

Door sheet material (example of center opening door, and some base materials)



Door configuration	Center opening automatic (CO)	Side opening automatic (2S)	Four panels center opening (2CO)
--------------------	-------------------------------	-----------------------------	----------------------------------

Please refer to the product specification for the selection of the door opening method according to the size of the shaft and selection of base materials other than display materials  
Note: This is a rendering picture, just for illustration



Note: Rendering pictures are for display only

# ■X-FRAME ALUMINUM ALLOY FRAME

The lift and the frame original brand

The dedicated frame shaft designed by X • HOMELIFT allows owners to choose different colors and materials according to the overall decoration style of the mansion.

# FUNCTION INTRODUCTION



## GENERAL OPERATION FUNCTION

- |                                |   |                          |
|--------------------------------|---|--------------------------|
| ● Collective selective control | ● Automatic main floor returning        | ● Record of running time |
| ● Door opening time setting    | ● Wrong instruction cancelling function | ● Overload protection    |
| ● Door service floor settings  | ● Service floor setting                 | ● Electric brake release |
| ● Light curtain protection     | ● Self-rescue at low speed              | ● Fault data record      |
| ○ Door independent control     | ● Startup torque automatic compensation | ○ Through door           |
| ● Door lock safety monitoring  | ● Direct landing                        |                          |
| ● Landing at another floor     | ● Record of running times               |                          |



## MAINTENANCE FUNCTION

- |                           |                                       |                         |
|---------------------------|---------------------------------------|-------------------------|
| ● Maintenance running     | Floor position intelligent correction | ● Elevator running test |
| ● Motor parameters tuning |                                       |                         |



## SAFETY FUNCTION

- |                                  |                         |                          |
|----------------------------------|-------------------------|--------------------------|
| ● Intelligence automatic rescue  | ● One-key remote rescue | ● Main floor calibration |
| ● Power failure automatic rescue |                         |                          |



## ENERGY SAVING CONFIGURATION

- |                     |                                   |                           |
|---------------------|-----------------------------------|---------------------------|
| ● Car energy saving | ● Idle door machine energy saving | ● Fan independent control |
|---------------------|-----------------------------------|---------------------------|

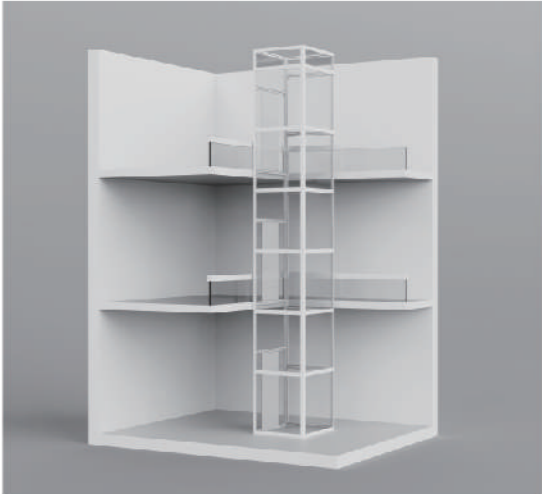
Note: Some of the above function lists are optional functions,  
and you can learn about specific function configurations with sales personnel

# APPLICABLE TO MULTI-SCENE INSTALLATION

We can meet different scenarios according to the needs of the owners



Scene installation Backed by the wall



Scene installation Hall or wall corner



Scene installation In the middle of the circular staircase



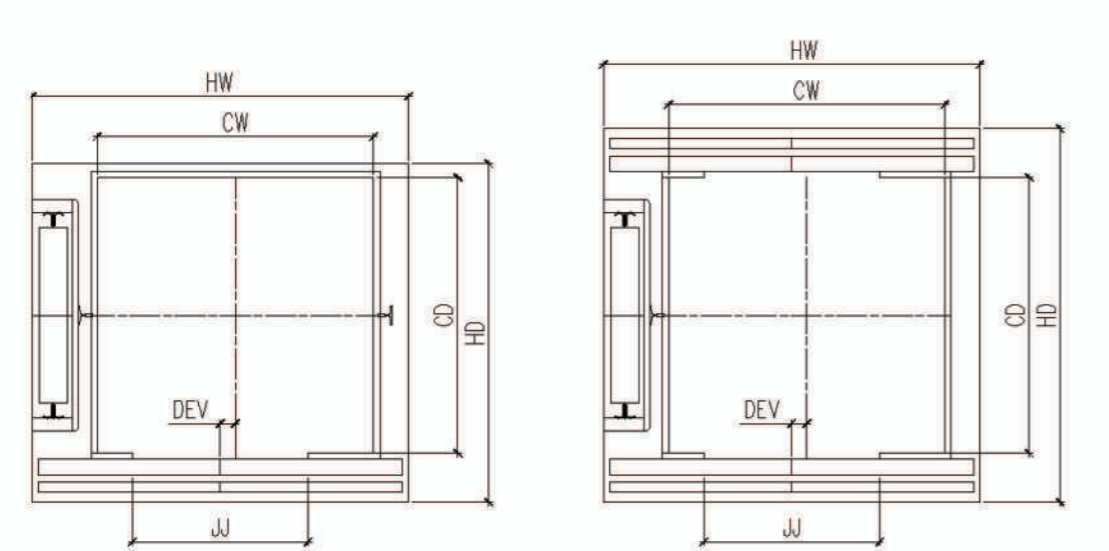
Scene installation Floor opening

# APPLICABLE CIVIL SHAFT PARAMETERS

Note The Dimensions Are Only For Design Reference, And The Details Are Subject To The Civil Engineering Layout Confirmed By Both Parties

## Structural mode: side counterweight

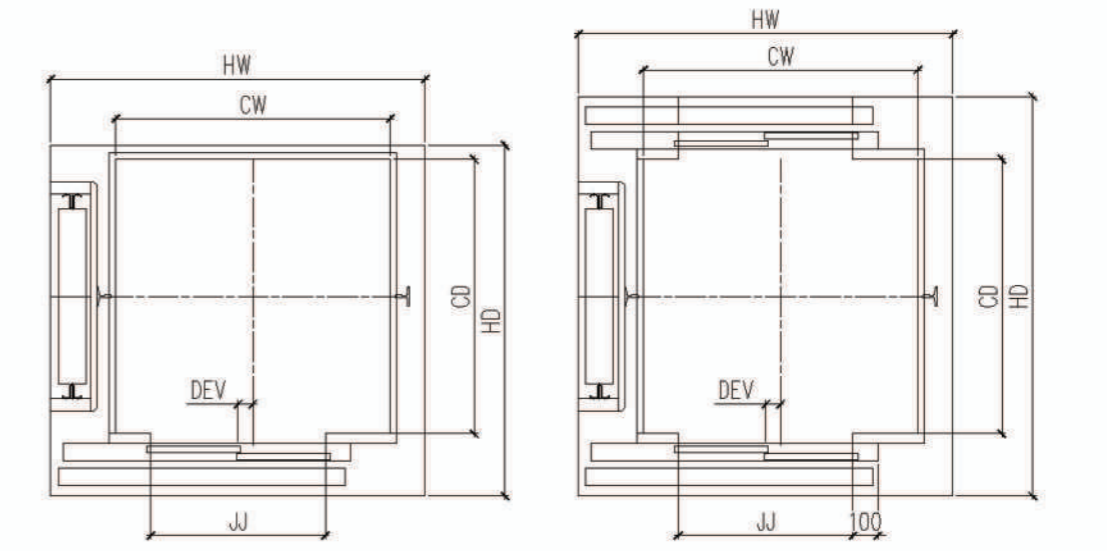
Center opening automatic door, shaft plan



Rated load(kg)	320/400
Rated speed(m/s)	0.4、0.63
Car clear dimension(CWxCDxCCH)(mm)	[650,1400] × [700,1400] × [2000,2500]
Car door opening dimension(JJxHH)(mm)	CO [600,1200] × [1900,2400]
Shaft dimension(HWxHD)(mm)	HW=CW+400; HD=CD+250 & single door; HD=CD+360 & through door

- Note:
1. CW&CD refers to the width and depth of the car structure, some decorations will occupy the space of the car, see the car decoration description for details.
  2. CCH is the height of the car structure, which includes the thickness of the ceiling and floor.

Side opening automatic door, shaft plan

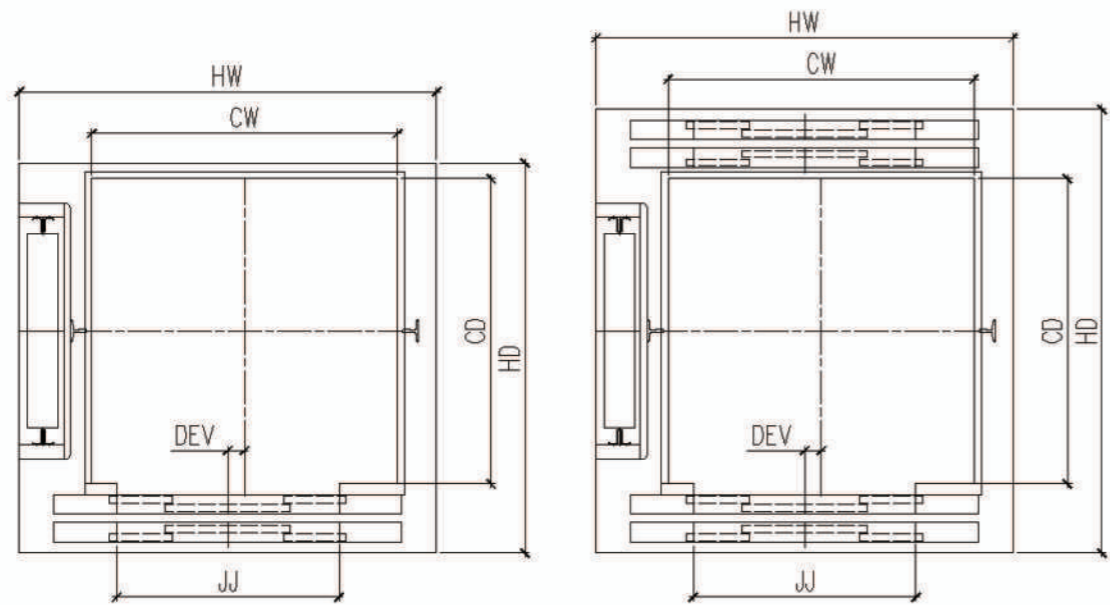


Rated load(kg)	320/400
Rated speed(m/s)	0.4、0.63
Car clear dimension(CWxCDxCCH)(mm)	[650,1400] × [700,1400] × [2000,2500]
Car door opening dimension(JJxHH)(mm)	2S [600,1200] × [1900,2400]
Shaft dimension(HWxHD)(mm)	HW=CW+400; HD=CD+325 & ; single door HD=CD+540 & through door

- Note:
1. CW&CD refers to the width and depth of the car structure, some decorations will occupy the space of the car, see the car decoration description for details.
  2. CCH is the height of the car structure, which includes the thickness of the ceiling and floor.

Note The Dimensions Are Only For Design Reference, And The Details Are Subject To The Civil Engineering Layout Confirmed By Both Parties

Four panels center opening door ,Shaft plan



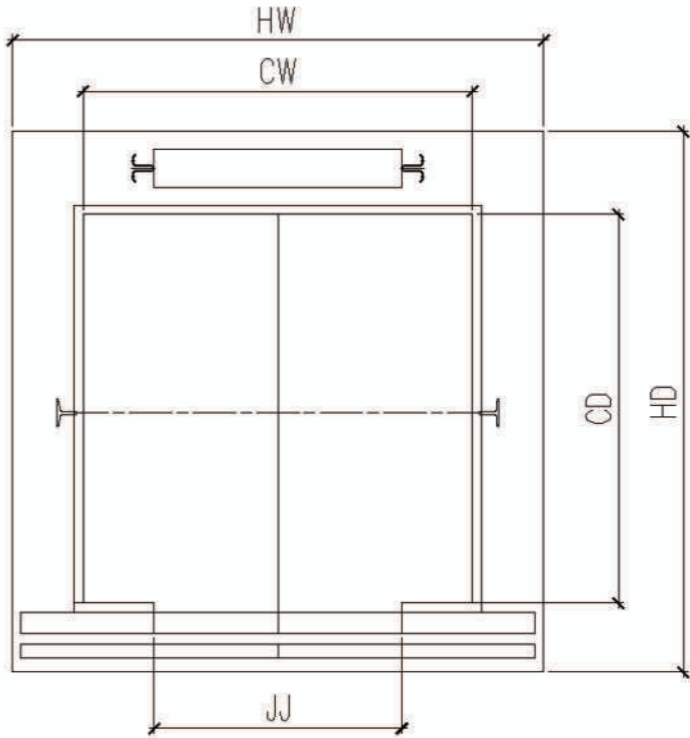
Rated load(kg)	320/400
Rated speed(m/s)	0.4、0.63
Car clear dimension(CWxCDxCCH)(mm)	[650,1400] × [700,1400] × [2000,2500]
Car door opening dimension(JJxHH)(mm)	2CO [600,1200] × [1900,2400]
Shaft dimension(HWxHD)(mm)	HW=CW+400; HD=CD+325 & single door ; HD=CD+540 & through door

- Note:
- CW&CD refers to the width and depth of the car structure, some decorations will occupy the space of the car, see the car decoration description for details.
  - CCH is the height of the car structure, which includes the thickness of the ceiling and floor.

Note The Dimensions Are Only For Design Reference, And The Details Are Subject To The Civil Engineering Layout Confirmed By Both Parties

Structural form: rear counterweight

Center opening automatic door, shaft plan

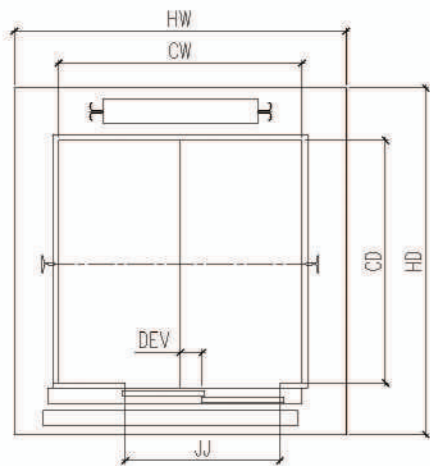


Rated load(kg)	320/400
Rated speed(m/s)	0.4、0.63
Car clear dimension(CWxCDxCCH)(mm)	[650,1400] × [700,1400] × [2000,2500]
Car door opening dimension(JJxHH)(mm)	CO [600,1200] × [1900,2400]
Shaft dimension(HWxHD)(mm)	HW=CW+300 single door ; HD=CD+415 through door

- Note:
- CW&CD refers to the width and depth of the car structure, some decorations will occupy the space of the car, see the car decoration description for details.
  - CCH is the height of the car structure, which includes the thickness of the ceiling and floor.

Note The Dimensions Are Only For Design Reference, And The Details Are Subject To The Civil Engineering Layout Confirmed By Both Parties

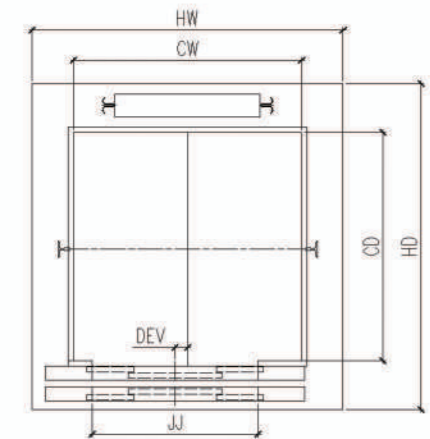
Side opening automatic door, shaft plan



Rated load(kg)	320/400
Rated speed(m/s)	0.4、0.63
Car clear dimension(CWxCDxCCH)(mm)	[650,1400]×[700,1400]×[2000,2500]
Car door opening dimension(JJxHH)(mm)	2S [600,1200]×[1900,2400]
Shaft dimension(HWxHD)(mm)	HW=CW+300; HD=CD+505

Note:  
1. CW&CD refers to the width and depth of the car structure, some decorations will occupy the space of the car, see the car decoration description for details.  
2. CCH is the height of the car structure, which includes the thickness of the ceiling and floor.

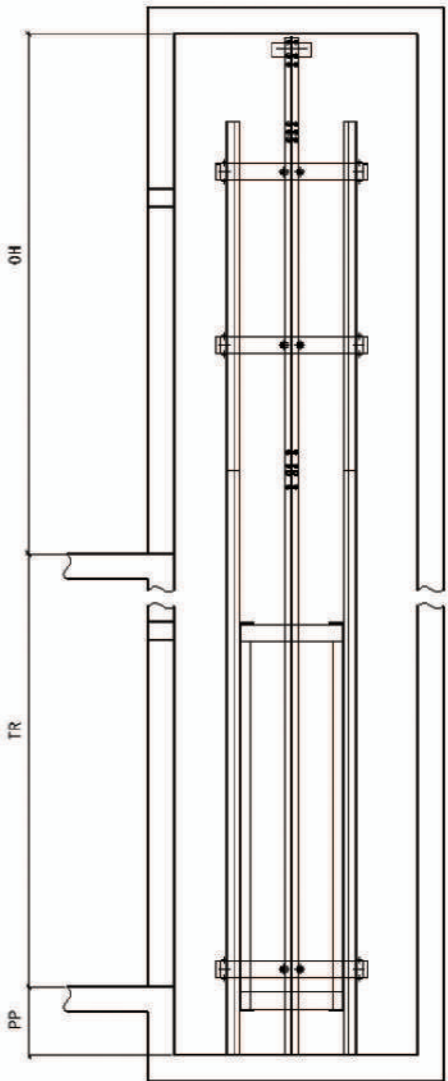
Four panels center opening door , Shaft plan



Rated load(kg)	320/400
Rated speed(m/s)	0.4、0.63
Car clear dimension(CWxCDxCCH)(mm)	[650,1400]×[700,1400]×[2000,2500]
Car door opening dimension(JJxHH)(mm)	2CO [600,1200]×[1900,2400]
Shaft dimension(HWxHD)(mm)	HW=CW+300; HD=CD+505

Note:  
1. CW&CD refers to the width and depth of the car structure, some decorations will occupy the space of the car, see the car decoration description for details.  
2. CCH is the height of the car structure, which includes the thickness of the ceiling and floor.

Shaft Elevation



Rated load(kg)	320/400	
Rated speed(m/s)	0.4	0.63
Lifting height TR(m)	≤ 20	
Number of landings	2 ~ 7	
Door clear height CH(mm)	1900-2400	
Headroom height OH(mm)	CCH+600 & side CWT CCH+750 & rear CWT	CCH+650 & side CWT CCH+750 & rear CWT
Pit depth PP(mm)	150	250